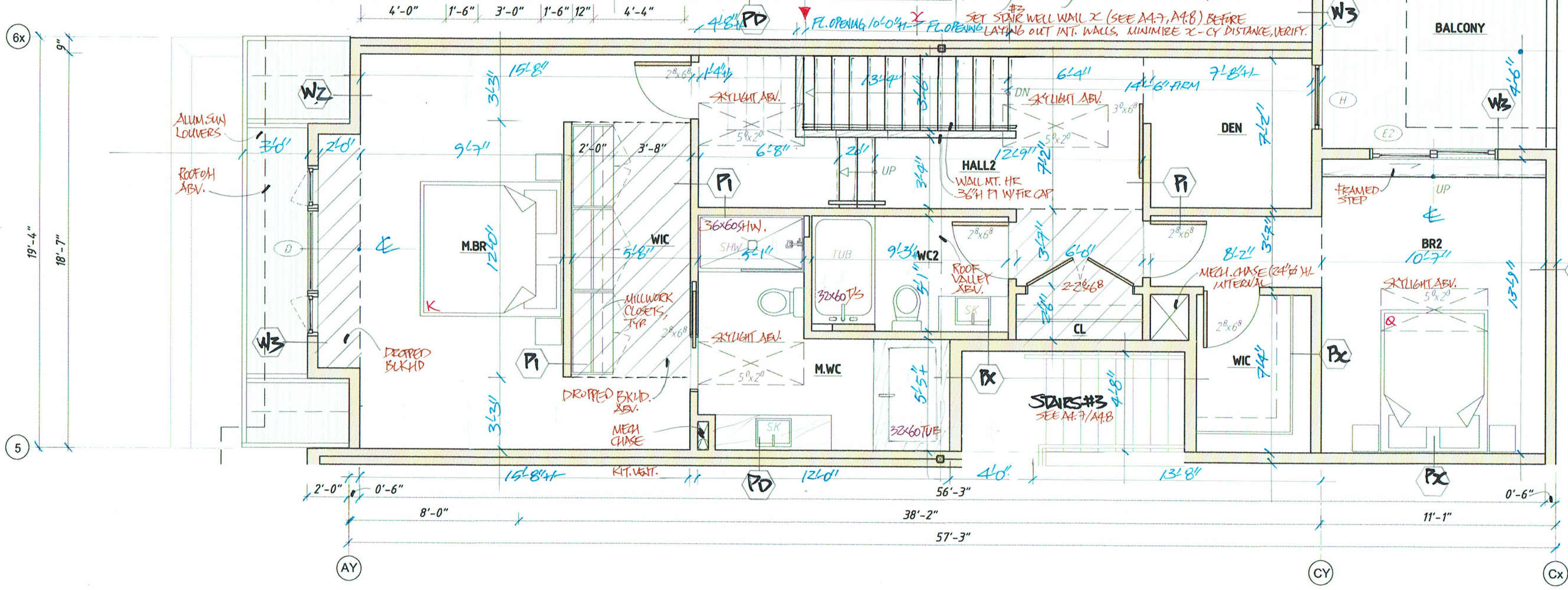


UNIT #5-L2 3/16"=1'0"

UNIT #5-L3 3/16"=1'0"



**R-05** UNIT PLANS  
1651 SQ.FT. 3/16"=1'0"



**266 BAKER ST.**  
DEANE TERRACE 2022, PH.2

Mar. 7, 2022 ISSUED FOR CONST.  
THOMAS LOH ARCHITECT

